



Australian Government

BUILDING OUR FUTURE



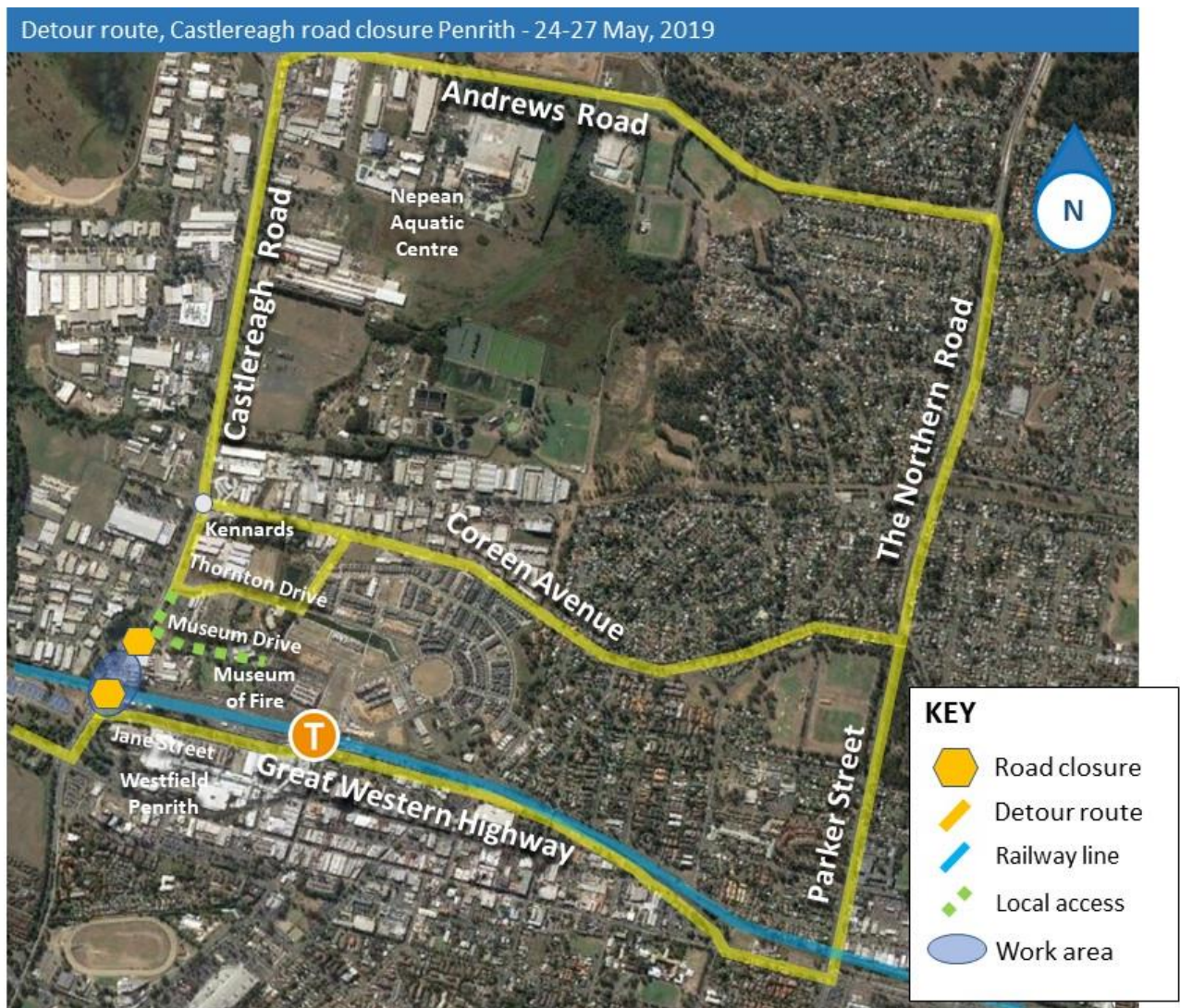
May 2019

Work progressing on Mulgoa and Castlereagh roads Penrith from Wednesday 1 May 2019

The Australian and NSW governments are jointly funding the \$105 million upgrade of Mulgoa Road, Penrith from Union Road to Museum Drive.

Work is underway for the Roads and Maritime Services road upgrade project. This includes replacing the existing railway bridge, to help improve traffic flow along the Mulgoa Road and Castlereagh Road corridor, including High Street.

Map of road closure work in May



From **Wednesday 1 May** to **Friday 31 May 2019** early work for the rail bridge construction will take place on Castlereagh Road, between Jane Street and Museum Drive. Road widening work will continue with earthwork and utilities relocation on Mulgoa Road, High Street and Castlereagh Road. Traffic management will be in place for motorist and pedestrian safety.



Australian Government

BUILDING OUR FUTURE



Our work schedule

Work will be carried out between **Wednesday 1 May** and **Friday 31 May 2019**.

Work hours are Monday to Friday between **7am** and **6pm** and some nights between **9pm** and **6am**, and Saturdays **8am** to **1pm**.

24-27 May a full closure of Castlereagh Road and detours in place.

Contact

If you have any questions, please contact our delivery partner McConnell Dowell on 1800 951 118 or email mulgoaroad.penrith@mcdgroup.com

For more information on our projects visit rms.nsw.gov.au/projects/sydney-west/index.html

The work will include the following activities:

- truck movements and delivery of equipment and materials
- earthwork and concreting
- potholing, piling and concrete work for bridge structures
- telecommunication service, gas mains, electrical services and water mains investigation and relocation
- traffic and pedestrian detours.

How will the work affect you?

A full closure of Castlereagh Road, between Jane Street and Museum Drive will take place day and night from **9pm Friday 24 May** to **5am Monday 27 May 2019**. This full closure enables tasks associated with the new bridge construction to be completed in 24 hour shifts due to limited rail corridor access.

Traffic and pedestrian detours will be in place, for your safety please follow traffic signs. At other times, earthwork will be underway at various times on Mulgoa and Castlereagh roads and High Street from **Wednesday 1 May** and **Friday 31 May**.

At times, temporary traffic lane closures will be in place on **weekdays** between **10am** and **3pm**, periodically between **8.30pm** to **5am**, and **Saturdays 8am** to **1pm** to support potholing, piling, concreting and utility investigations and adjustments. Traffic flow will be maintained in both directions.

Our work may be noisy from piling machines, concrete saws, and earthwork machinery. We have measures in place to minimise impacts including the completion of noisier tasks by **10pm**.

Traffic changes

There will be a full closure of Castlereagh Road from **Friday night 24 May** to early morning **Monday 27 May 2019**. During lane closures traffic control and a reduced speed limit of **40 km/h** may be in place for the safety of workers and motorists.

Please refer to the detour map on the first page. Please follow direction of traffic controllers, speed and detour signs. All traffic changes will be temporary during our work hours. For the latest traffic updates call 132 701, visit livetraffic.com.au or download the Live Traffic App.



If you need help understanding this information, please contact the Translating and Interpreting Service on 131 450 and ask them to call us on 1800 951 118.